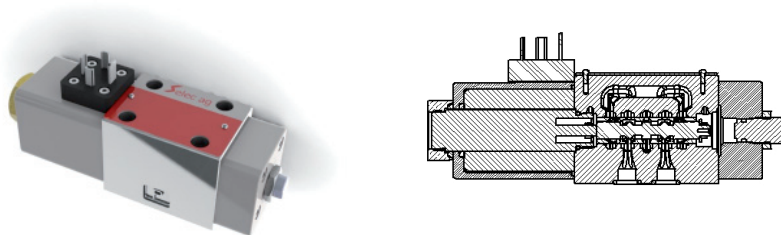


Characteristics of D40V

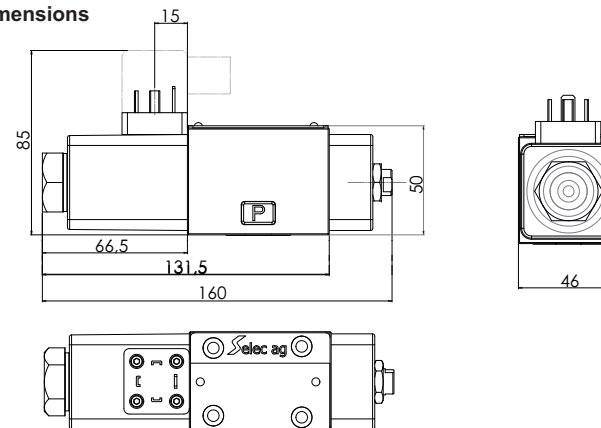
- Proportional Servo Valve for position-, Velocity-, and Pressurecontrol
- Direct Spooldrive with bidirectional proportional magnet
- Attachment pattern NG 6 / Cetop 03 for 4-ports
- Customer requested fail-safe-Spoolposition when electrical power down
- Recommended as pilotvalve for two stage valves



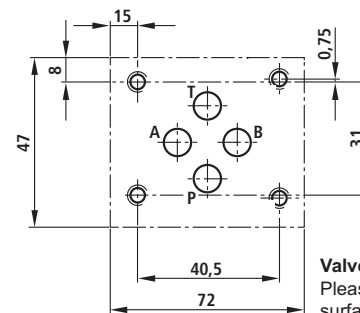
Technical Data D40V

Function	Direct driven 4/3-Valve				
Spool drive	Bidirectional proportional magnet				
Attachment pattern	Cetop 03 / NG 6				
Nominal Flow at 70 bar ΔP	1 L/min	2 L/min	5 L/min	10 L/min	20 L/min
Frequencyresponse at 90° phaseshift and 40% amplitude	180 Hz	180 Hz	180 Hz	180 Hz	180 Hz
Leakage at 70 bar, 40 cSt	0,03 L/min	0,06 L/min	0,15L/min	0,30 L/min	0,40 L/min
Step response for 100% amplitude	<6ms				
Max. pressure in P, B, A	350 bar				
Max. pressure in T without Y	250 bar				
Max. pressure in T with Y	350 bar				
Temperature range	-20 until 70C°				
Fluid viscosity	20 until 360 cSt.(adjustmentvalues at Selec with 30cSt.)				
Requested cleanliness-class of hydraulic oil	NAS 1638: <7, ISO 4406: 16/13				
Resolution	1% of rated signal				
Hysteresis	<10%				
Null shift with pressurechange of 20%	<2%				
Null shift with temperaturchange of 40C°	<5%				
Electric connector 3+PE	Standard: DIN 43650-1 (Other on customer request)				
Connector 3+PE (Customerside)	(not included, but available)				
Customer-Signal	+/-1.7 Amp				
Amplifier Electronics	AE-D40V				
Fail-safe spoolposition	Standard: 0 Position Oprtional: A→T / B→T				
Type of protection	IP65				
Installation position	any				
Weight	1.6 Kg				

Dimensions



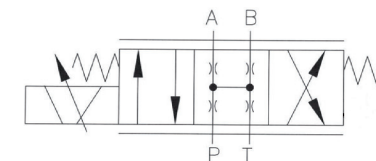
Hydraulic attachment



Valveattachment-surface
Please assure the following valveattachment-surface quality:



Hydraulic Schema



Electrical Connection

Pin 1 *	Coil
Pin 2	Not used
Pin 3	Coil
PE ⊕	Protected earth

- * Positive command signal on Pin 1 shows flow P→A and B→T
- * Negative command signal on Pin 1 shows flow P→B and A→T

Installation instructions

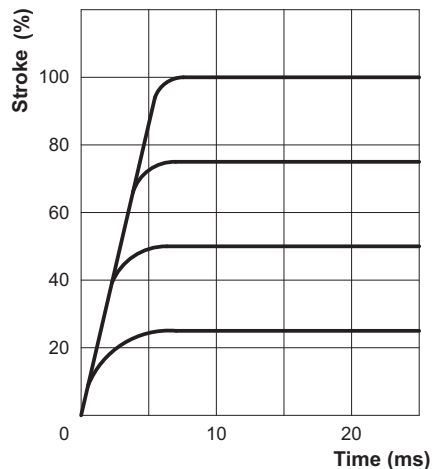
Torque for valvefixing-screws

The required torque for the M5 screw is 7.6Nm. No dirt or grease allowed!

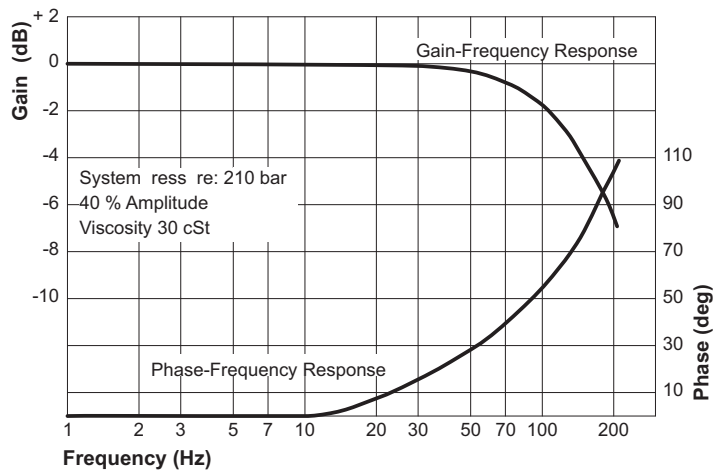
Oil filtration

in pressureline P, just before the valve, the <10um absolut filtration must be installed. Previous flushing of all oil through filter and flushingplate is recommended. Please ask for the flushing plate.

Step Response



Frequency Response



Orderinformation

D40V

□ □ □ □ □ □

Code	Overlap
Z	Zero overlap
Y	overlap 2%
X	overlap 10%

Selec Specific

Code	Flow at 70 bar Δ
20	20 L/Min
10	10 L/Min
5	5 L/Min
2	2 L/Min
1	1 L/Min

Code	Orientation of valve
B	Connector on B-side (Standard)
A	Connector on A-side

Code	Spool position when power down
A	A to Tank
B	B to Tank
M	No flow

Code	Seal Material
V	Viton (FPM)
N	NBR