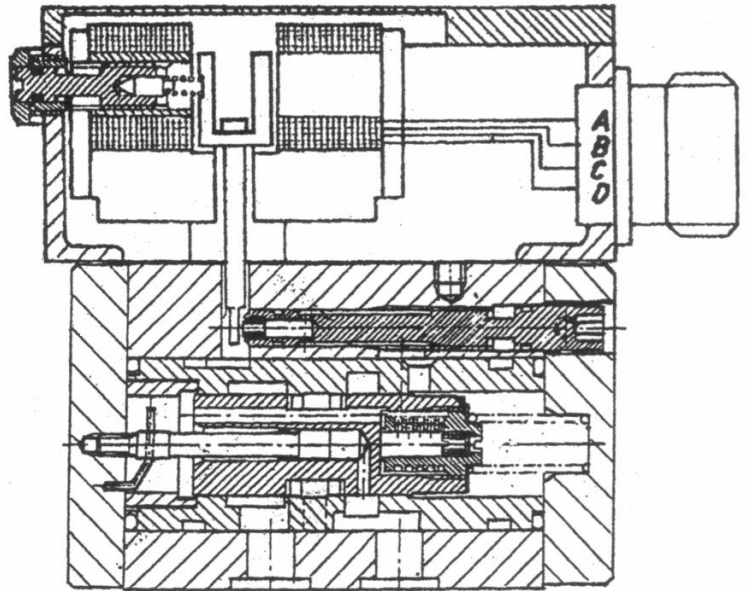
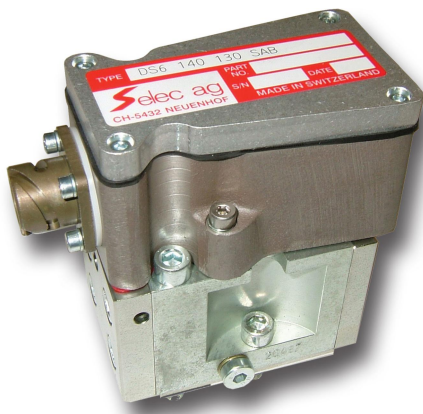


Valve features

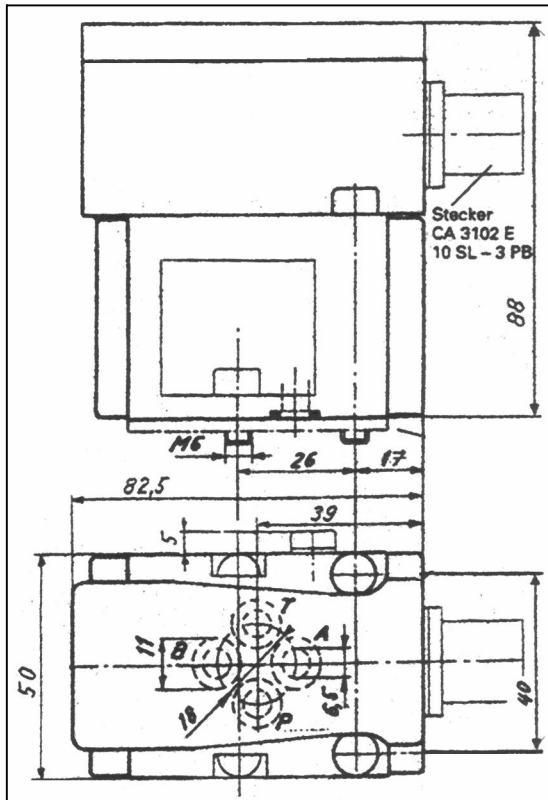
- Servovalve for position-, force- or pressureregulation
- Two stage servovalve with mechanical feedback
- First stage nozzle / flapper
- 2-stage design with dry isolated torque motor
- Fully iron
- Rugged, long-life design
- Port pattern NG 6 / Cetop 03 for 4-ports
- High resolution
- High pressure application
- Easy field maintenance



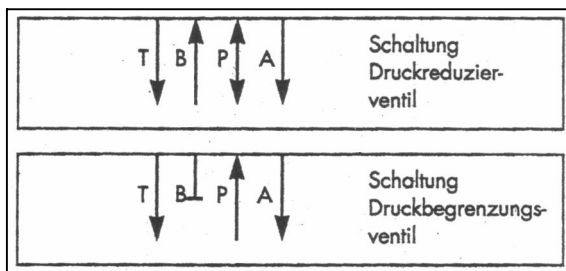
Technical data DS6

Port pattern	Selec Norm (Adapter for Cetop 03 / NG 6 available)
Rated Flow $\pm 10\%$ at 1000 psi ΔP Drop – cis at 70 bar ΔP drop – L/min	79.16 300
Frequency response at 90° Phase Shift , 210bar, at 40% amplitude – Hz	60
Step response in milli seconds	10
Leakage at 1000 psi, 50 cSt, cis 70 bar, 50 cSt, L/min	122.03 2
Maximum pressure, port P, A, B psi / bar	4500 / 315 (5000 psi / 350 bar on request)
Maximum pressure, port T psi / bar	1450 / 100
Temperature range F° / C°	4 to 194 / -20 to +90
Fluid viscosity	20 to 380 cSt
Resolution	0,2%
Hysteresis	<0.1%
Null point shift for pressure change of 20%	1%
Null point shift for viscosity change of 30 cSt	1.5%
Electrical feedback	No / electronics available
Electrical connector	3 pin /
Amplifier electronics	External amplifier electronics available (AE-1)
Weight	1.5 kg

Dimensions



Hydraulic Schema



Electrical Data

Coil	Typ	40	80	100	130	200
Parallel connection	max. J [mA]	52	104	130	170	350
	max. U [V]	32	16	10	8	5
Serial connection	max. J [mA]	27	53	66	86	175
	max. U [V]	63	31	21	15	9
Resistance per coil at	70° [Ω]	1200	300	160	90	24

Coil 130mA standard. Coil 40 mA, 80 mA, 100 mA, 200 mA on request.

Application examples

Breaking valve for road train (LRV), traction application, press, pulp-paper and textile machines, industrial automation, m.m.

Ordering information

Model Number	1...	2...	3...	4...	5...	6...	7...
1 Size/Type Mountin S 1-4 S 25 S 100 S 120 S 300 DS 6 DS 11						7 Splash water S Splash water resistant (IP xxx) N Not splash water resistant	
2 Pilot Drain Arrangement N Internal drain/internal pilot (Std.) (for Size 03, 05 & 07) Y Internal pilot/external drain (Size 07 only) X External pilot/external drain (Size 07 only)						6 Customer made C Customer made modif. edition N Normal edition	
3 Operating Pressure 040 580 PSI (40 Bar) 070 1000 PSI (70 Bar) 140 2000 PSI (140 Bar) 210 3000 PSI (210 Bar) 315 5000 PSI (315 Bar)						5 Torque Motor Coil 040 40 ma 080 80 ma 100 100 ma 130 130 ma (Standard) 200 200 ma	
						4 Seal Material V Viton (Standard) fluorocarbon E EDPM	